



2020 King of the Waitemata

Sunday 25th April 2021

The Organising Authority is the Takapuna Boating Club

SUPPLEMENTARY SAILING INSTRUCTIONS (SSI)

This sheet and Attachment A are supplements to Appendix S of the Racing Rules of Sailing (*page 146 RRS 2021-2024*).

RULES

SSI 1 All competitors shall carry a **waterproof mobile phone with the AVCG Safetrx App** downloaded and tracking on. A visual form of communication such as smoke flares are highly recommended

NOTICES TO COMPETITORS (SI 2)

SSI 2 The race office is located at the Main Deck, 39 The Strand, Takapuna.
Notices to competitors will be placed on the official notice board at the main deck, 39 The Strand, Takapuna.

SIGNALS MADE ASHORE (SI 4)

SSI 3 Signals ashore will be displayed on the flagstaff located at the south east corner of the club.

SSI 4 When a visual signal is displayed over a fleet(s) or course(s) flag, the signal applies only to that fleet(s) or course(s). This changes Race Signals preamble.

SCHEDULE OF RACES AND CLASS FLAGS (SI 5)

Day/Date	Fleet/Class	Number of Races	Time of first warning signal	Class Flag
25 April 2021	All Classes	1	13.00	Class Flags

SSI 5 There will be a compulsory safety briefing for all sailors at 11:00 in the Takapuna Boating Club Main Deck, 39 The Strand, Takapuna.

COURSES (SI 6)

SSI 6 The course to be sailed, the order in which the marks are to be passed, and the side on which each mark is to be left are shown in Attachment A.
The first competitor in each class to pass Flax Point after the start will be eligible for a prize. Competitors completing the course with 1 Hour and 15 minutes will be eligible to compete in a Top Gun lap. Prizes will be awarded to the winners of each class.

THE START (SI 9)

- SSI 7** To alert boats that a race or sequence of races will begin soon, the orange starting line flag will be displayed with one sound at least five minutes before a warning signal is made.
- SSI 8** When a starting sequence is in progress, boats whose warning signal has not been made shall avoid the starting area. The starting area is defined as the area 50 metres from the starting line and marks in all directions.
- SSI 9** A boat starting later than four minutes after her starting signal will be scored Did Not Start without a hearing. This changes RRS A4.1

TIME LIMITS (SI 12)

Fleet/Class	Target time for first finisher	Finish Window	Race time limit
Kites	1 Hour	1 Hour	3 Hours
Windfoilers	1.5 Hours	1 Hour	3 Hours
Skiffs	2 Hours	1 Hour	3 Hours
Wing Foil	2 Hours	1 Hour	3 Hours

There is no prescribed time limit for the first boat to pass mark 1.

PENALTY SYSTEM

- SSI 10** For skiff and foiling classes rule 44.1 is changed so the Two-Turns Penalty is replaced by a One-Turn Penalty.

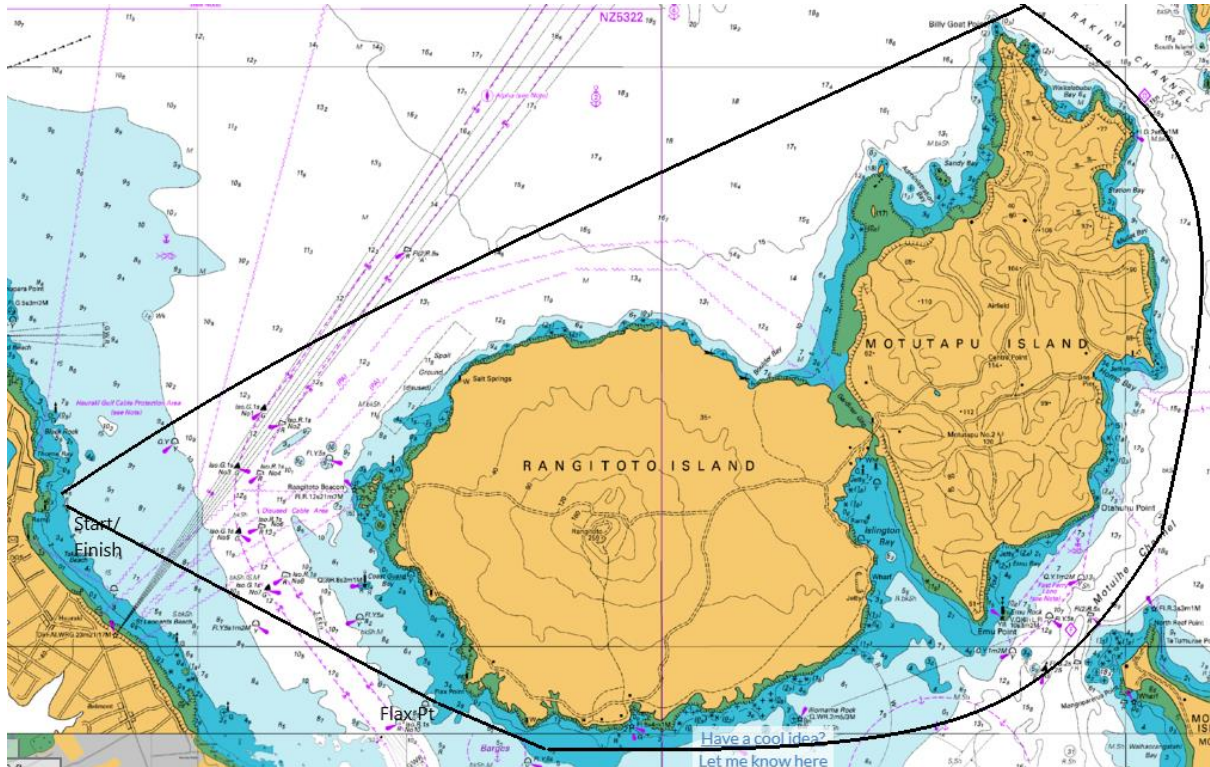
CHECK OUT AND CHECK IN

- SSI 11** Boats shall comply with the following check out and check in procedure: All competitors shall sign on and off at Takapuna Boating Club.

- SSI 12** All support vessels shall be registered with the Race Committee.

ATTACHMENT A

Race Course



Start from “Witches Hat” anti-clockwise around Rangitoto and Motutapu Islands leaving Flax Point yellow buoy to starboard.